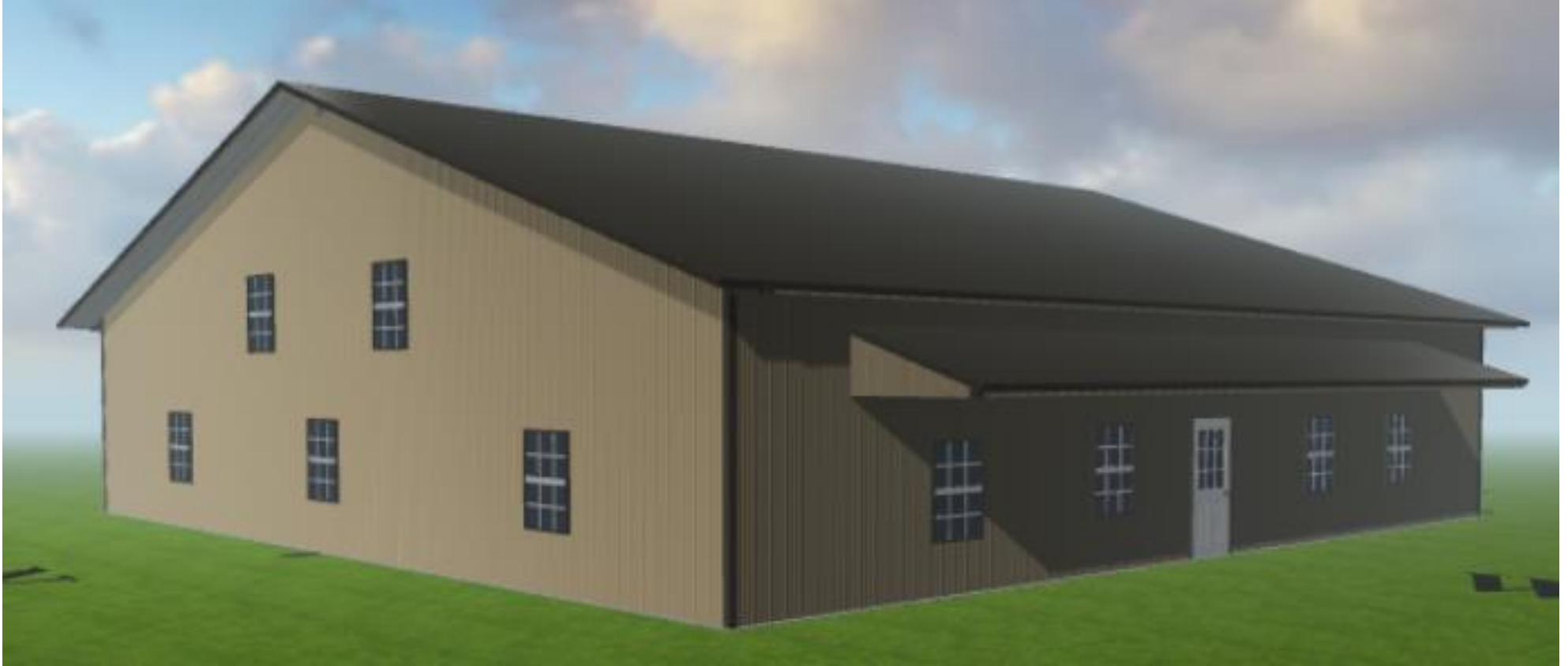


60x60 Barndominium Floor Plan 1

Size: 60 ft wide x 60 ft long x 12 ft sidewalls

Total Square Footage: 3,600

4 Bed / 3 Bath



The best part about a Worldwide Steel Frame Barndominium Building Kit is that you can completely customize every aspect of your design and floor plans, including roof pitch, wall height, porches, exterior accents and so much more! Below is just one example of how you can setup your interior framing to maximize your usable space. You can also incorporate any size garage area to meet your space requirements.

60x60 Floor Plan Sample 1 in 3D



60x60 Floor Plan Sample 1 in 2D

