

6" STEEL GIRT

CLIPS FOR FLUSH MOUNT GIRTS

STEEL TUBE COLUMN

RIBBED METAL PANEL

INSIDE CLOSURES

STD. SCREW PATTERN

SQUARE BASE TRIM

OPTIONAL SILL SEAL (BY OTHERS)

SPRAY FOAM OR STANDARD INSULATION (BY OTHERS)

1/2" FOAM BOARD INSULATION (BY OTHERS)

ANCHOR BOLTS (BY OTHERS)

PLASTIC J-BEAD (BY OTHERS)

ANCHOR BASE GIRT TO CONCRETE (BY OTHERS)

### BASE SECTION DETAIL

STEEL BASE PLATE

GIRT CLIP ABOVE

RIBBED METAL PANEL

STEEL TUBE COLUMN

SLAB EDGE

ANCHOR BOLTS (BY OTHERS)

1/2" FOAM BOARD INSULATION (BY OTHERS)

GYPSUM WALL BOARD (BY OTHERS)

### PLAN DETAIL

9/2017

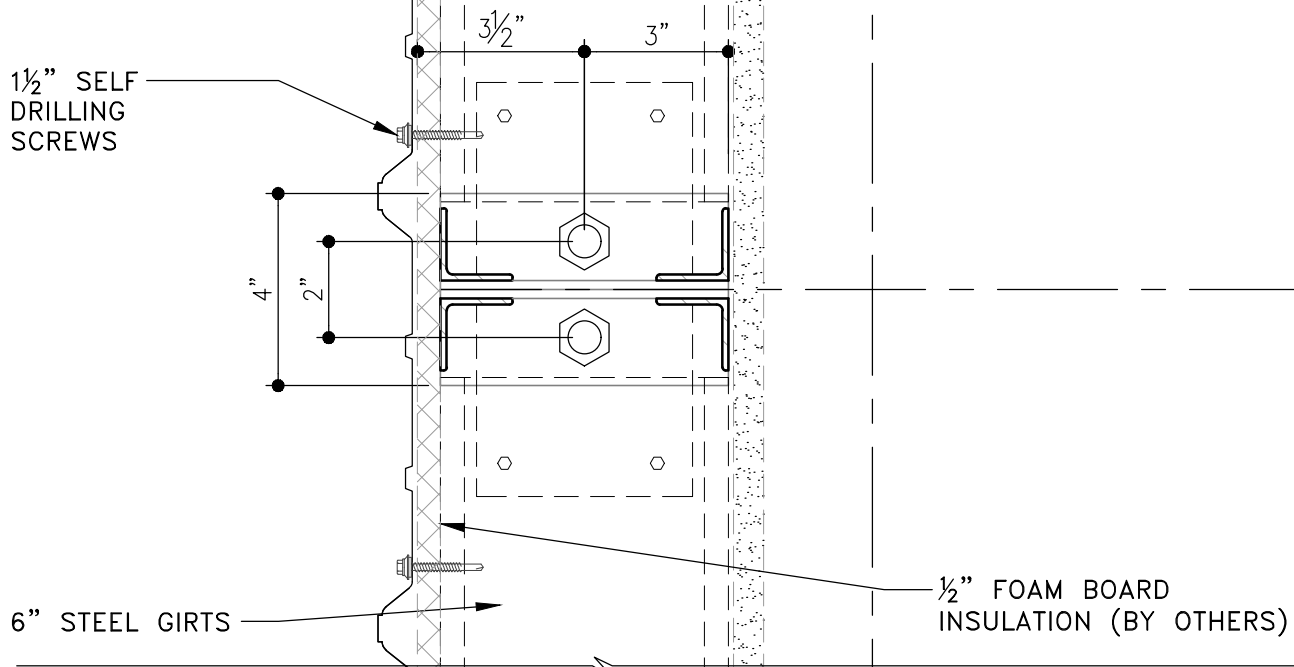


Worldwide Steel Buildings

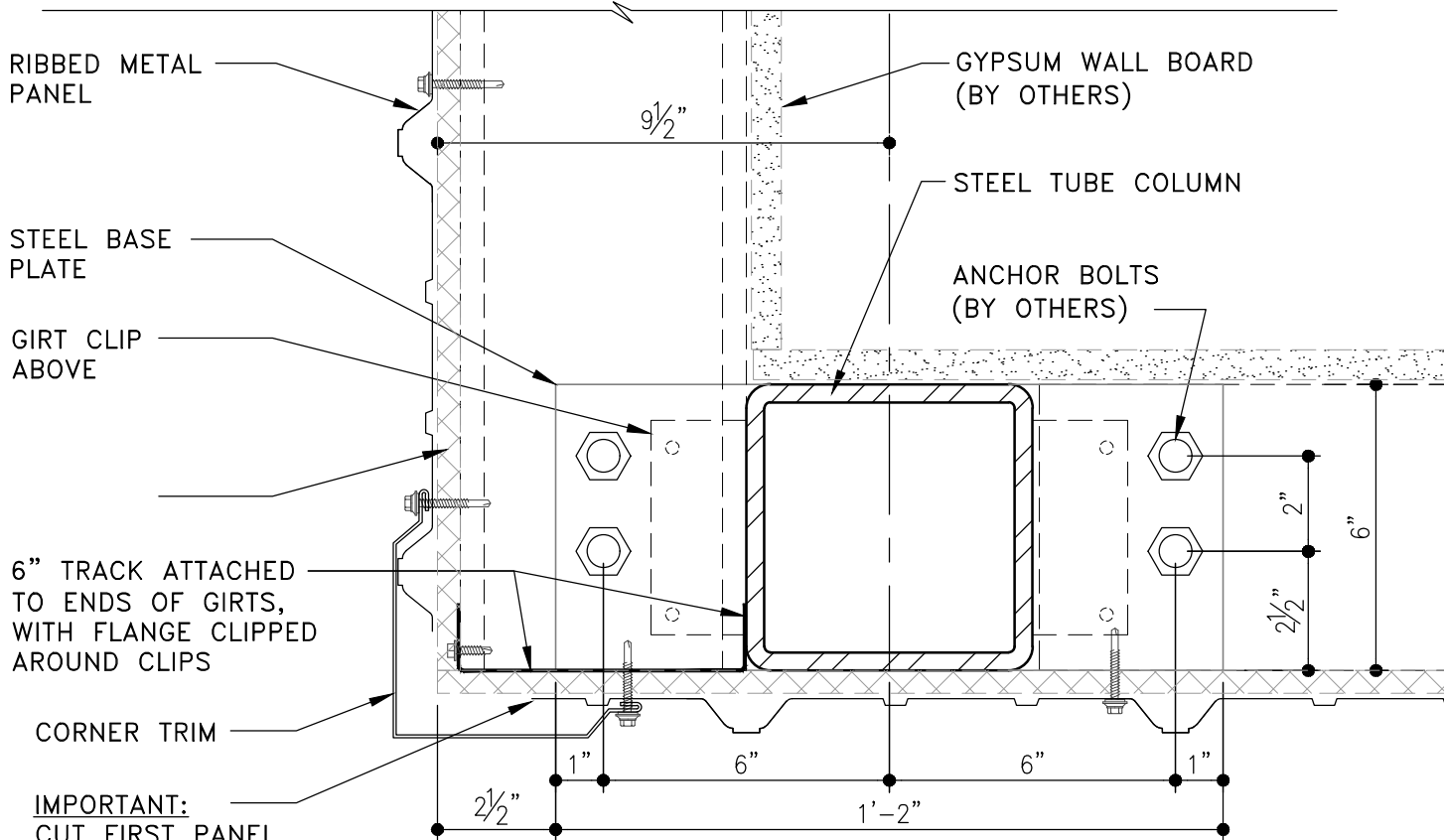
PO Box 588  
Peculiar, MO 64078  
Fax: 816.779.7361  
Phone: 816.779.6441

*Tube Sidewall Column*  
*6" Girt & Cont. Insulation - Plan & Sect.*

*DS*  
*201a*



END WALL COLUMN (SEE DS 104)



**IMPORTANT:**  
CUT FIRST PANEL  
SO THAT SCREW  
PATTERN DOES NOT  
HIT TUBE COLUMNS

CORNER PLAN DETAIL

8-1-17



Worldwide Steel Buildings  
PO Box 588  
Peculiar, MO 64078  
Fax: 816.779.7361  
Phone: 816.779.6441

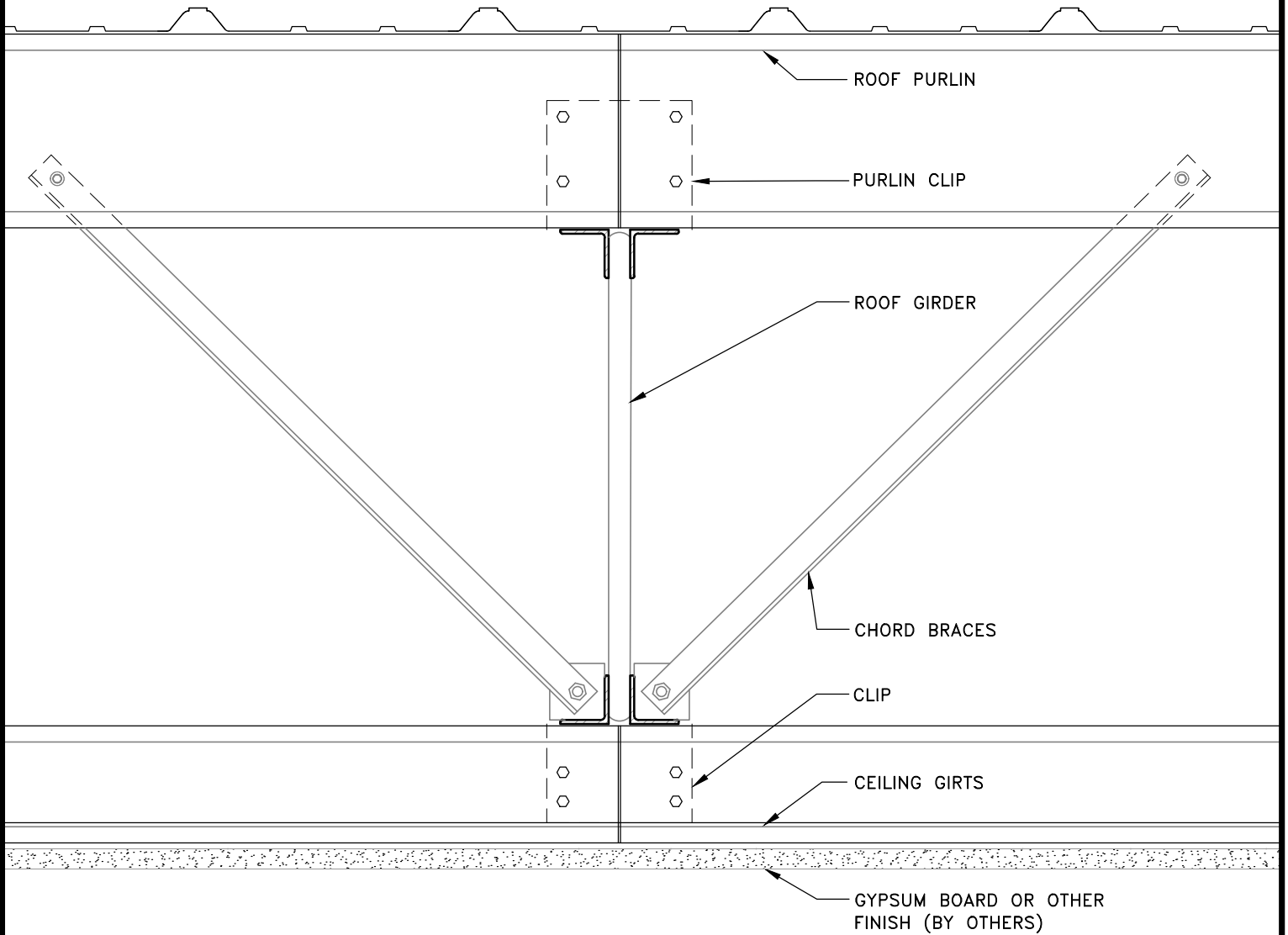
*Tube Column at Corner*  
*6" Girt & Cont. Insulation - Plan*

*DS*  
*207a*

DT  
A-A

3 $\frac{5}{8}$ " GIRTS ON CLIPS ATTACHED  
TO BOTTOM OF ROOF GIRDERS

BUILDING SECTION



DETAIL A-A at ROOF GIRDER

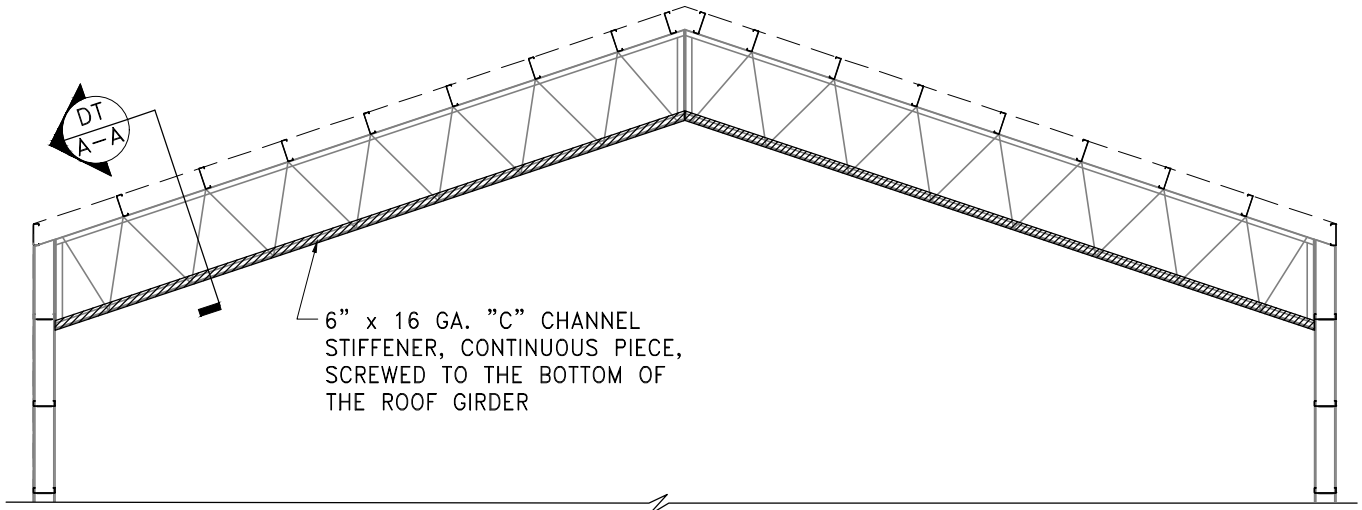
07-20-17



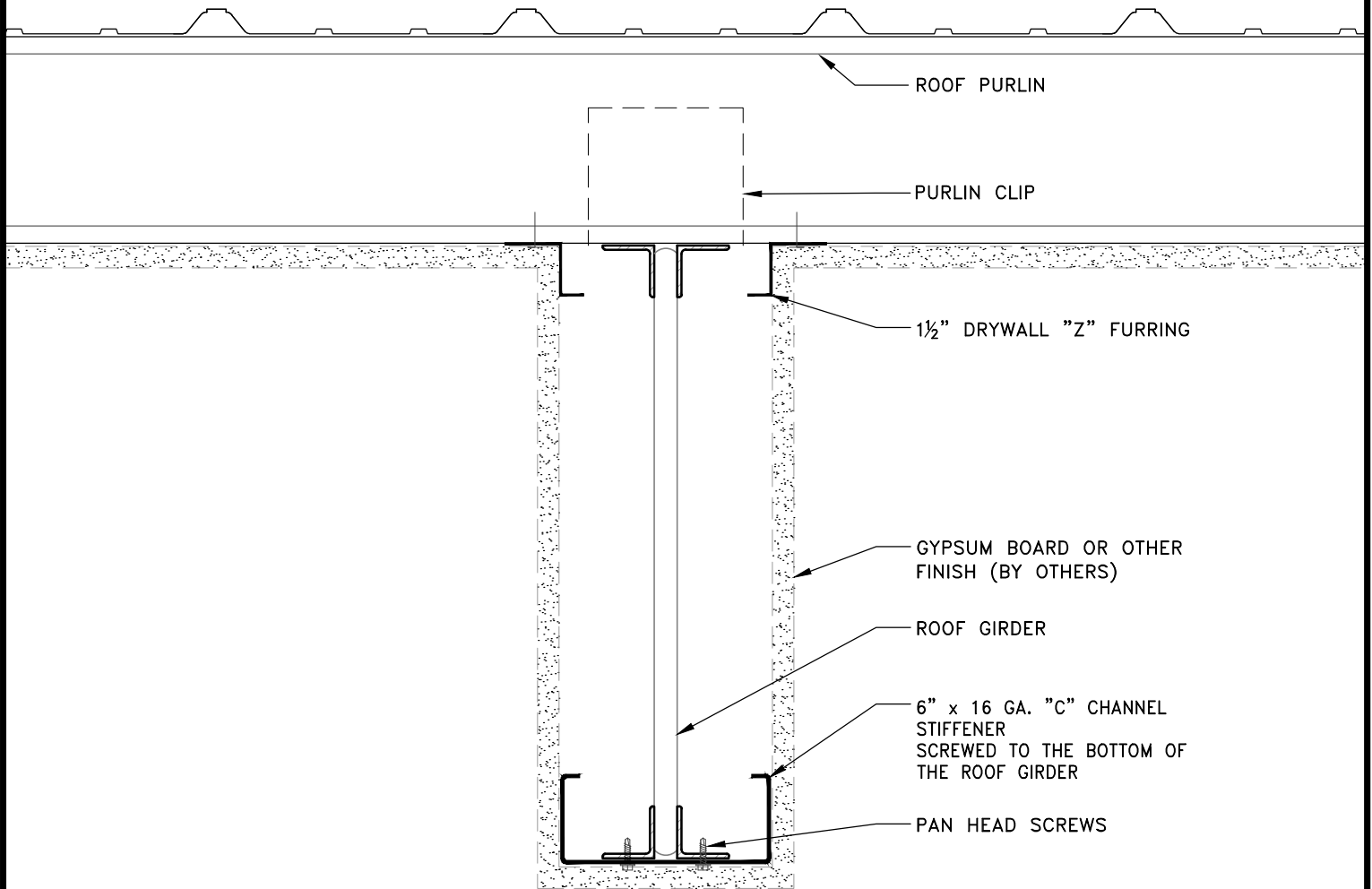
Worldwide Steel Buildings  
PO Box 588  
Peculiar, MO 64078  
Fax: 816.779.7361  
Phone: 816.779.6441

*Ceiling Below Roof Girders*  
*Ceiling Girts and Clips*

*DS*  
*208a*



BUILDING SECTION



DETAIL A-A at ROOF GIRDER

07-20-17



Worldwide Steel Buildings  
 PO Box 588  
 Peculiar, MO 64078  
 Fax: 816.779.7361  
 Phone: 816.779.6441

*Finish Wrap of Roof Girder*  
*Stiffener Added To Omit Chord Braces*

*DS*  
*208b*